

▶ Socket

# LGA 7529

▶ CPU

## Intel® Granite Rapids AP



**C1** Aluminum Stacked fins with 8 heat pipes. It is suitable for 2U and up. Support up to 450 watts of CPU Heat Dissipation.

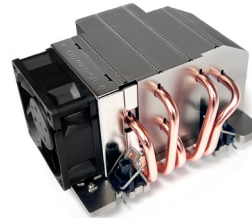
Dimensions	126.8 x 97.8 x 64 mm
Weight	650 g
Thermal Performance	450W@40°C ambient



CPU 450 WATTS 2U AI FIN

**C2** Active cooler For 2U servers and up. Aluminum Stacked fin with 5 heat pipes it efficiently dissipates heat for CPU up to 400W.

Dimensions	132.5 x 97.8 x 67 mm
Weight	630 g
Ball Bearing	2 Ball Bearing
Max. Speed	11000 ± 10% RPM
Max. Air Flow	58.31 CFM
Noise Level	25.8 dBA - 59.8 dBA
Thermal Performance	400W@40°C ambient



CPU 400 WATTS 2U AI FIN

**C4** Aluminum Stacked fin and a copper vapor chamber base. It is optimized for 1U servers and up, support for CPU heat dissipation of up to 400 W.

Dimensions	126.8 x 97.8 x 26.8 mm
Weight	450 g
Thermal Performance	400W@40°C ambient



CPU 400 WATTS 1U AI FIN Cu V'C

**7529-C** Cold plate for Intel Xeon Scalable Granite Rapids AP socket LGA7529, support 1U server and up. Copper Cold plate with Plastic Cover, EPDM hose. Available with quick disconnect options.

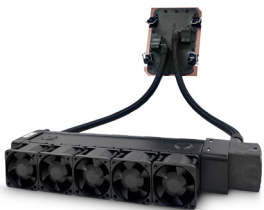
Dimensions	128 x 97.8 x 26.5 mm
Weight	430 g
Supported Connector Type	CPC Evers LQ2 Staubli SCG03 ( F/M )
Thermal Performance	1900W @ 0.7 LPM 42°C Coolant



CPU 1900 WATTS 1U Cu PLATE

**L37** All-in-one Liquid Cooler for 1U server, five 40 x 40 x 28 mm PWN Fans with Maximum 18000 RPM Fan Speed, support CPU TDP up to 500 W.

Cold Plate dim	126.8 x 97.8 x 26.5 mm
Radiator dim	278.6 x 86.0 x 40.0 mm
Ball Bearing	2 Ball Bearing
Max. Speed	18000 ± 10% RPM
Max. Air Flow	26.5 CFM
Noise Level	16 dBA - 57 dBA
Thermal Performance	500W@40°C ambient



CPU 500 WATTS 1U Cu PLATE

**L38** All-in-one Liquid Cooler for 2U Server, Three 80 x 80 x 38 mm PWM Fans with Maximum 8000 RPM Fan Speed, support CPU TDP up to 700 W.

Cold Plate dim	126.8 x 97.8 x 26.5 mm
Radiator dim	297.4 x 82.0 x 83.5 mm
Ball Bearing	2 Ball Bearing
Max. Speed	8000 ± 10% RPM
Max. Air Flow	115.61 CFM
Noise Level	1.39 dBA - 34.06 dBA
Thermal Performance	700W@40°C ambient



CPU 700 WATTS 2U Cu PLATE

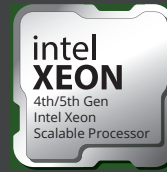


▶ Socket

# LGA 4710

▶ CPU

Intel® Sapphire Rapids / Emerald Rapids



## 4710-C 4710-S

Cold plate for Intel Xeon Scalable Granite Rapids SP socket LGA4710, support 1U server and up. Copper Cold plate with Plastic Cover, EPDM hose. Available with quick disconnect options.

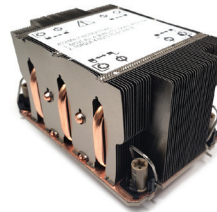


Dimensions	118 x 78 x 24.7 mm
Weight	350 g
Supported Connector Type	CPC Everis LQ2 Staubli SCG03 ( F/M )
Thermal Performance	1520W @ 0.7 LPM, 42°C coolant

CPU 1520 WATTS 1U Cu PLATE

## S2-4710

Aluminum Stacked Fins, 5 Heat pipes with Copper Vapor Chamber Base, Passive Cooler for 2U Server and up, Support 350W CPU Power Heat Dissipation.



Dimensions	118 x 78 x 64 mm
Weight	526.6 g
Thermal Performance	350W@40°C ambient

CPU 350 WATTS 2U AI FIN Cu V.C

## S3-4710

Active Cooler for 1U Server and up, Copper Heat sink with Vapor Chamber Base, Steel Dual-Outlet PWM Blower, Support 205 Watts CPU Power Heat Dissipation.

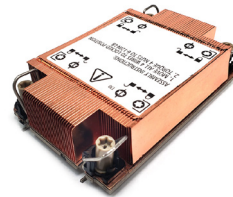


Dimensions	118 x 80 x 27 mm
Weight	424.6 g
Ball Bearing	2 Ball Bearing
Max. Speed	8600 ± 10% RPM
Max. Air Flow	26.25 CFM
Noise Level	23.3 dBA - 62.2 dBA
Thermal Performance	205W@40°C ambient

CPU 205 WATTS 1U Cu FIN Cu V.C

## S4-4710

Copper for both Vapor Chamber Base and Stacked Fins, Passive Cooler for 1U Server and up, Support 205 Watts CPU Power Heat Dissipation.

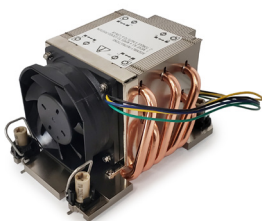


Dimensions	118 x 78 x 27 mm
Weight	437.6 g
Thermal Performance	205W@40°C ambient

CPU 205 WATTS 1U AI FIN Cu V.C

## S5R1-4710

Active Cooler for 2U Server and up, Aluminum Stacked Fins with 5 Heat Pipes embedded, Side-blow fan with PWM Function, Support 350 Watts CPU Power Heat Dissipation.



Dimensions	118 x 82 x 66 mm
Weight	425.1 g
Ball Bearing	2 Ball Bearing
Max. Speed	11000 ± 10% RPM
Max. Air Flow	58.31 CFM
Noise Level	25.8 dBA - 59.8 dBA
Thermal Performance	350W@40°C ambient

CPU 350 WATTS 2U AI FIN

## S6-4710

Aluminum Stacked Fins with Heat Pipes directly contact CPU, Active Cooler for 3U Server and up, Support 350 Watts CPU Power Heat Dissipation.



Dimensions	128 x 91 x 110 mm
Weight	659.3 g
Ball Bearing	2 Ball Bearing
Max. Speed	4500 ± 10% RPM
Max. Air Flow	76.95 CFM
Noise Level	23.95 dBA - 50.91 dBA
Thermal Performance	350W@40°C ambient

CPU 350 WATTS 3U AI FIN

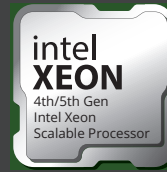


▶ Socket

# LGA 4710

▶ CPU

Intel® Sapphire Rapids / Emerald Rapids



**S7-4710** Copper 1100 Heat sink with Vapor Chamber Base. Passive Cooler for 1U Server and up, Support 205 Watts CPU Power Heat Dissipation.



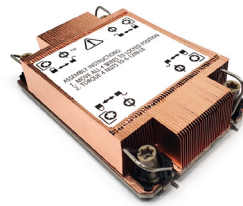
Dimensions	118.6 x 80.5 x 27.4 mm
Weight	424.6 g
Ball Bearing	2 Ball Bearing
Max. Speed	8600 ± 10% RPM
Max. Air Flow	26.25 CFM
Noise Level	23.3 dBA - 62.2 dBA
Thermal Performance	205W@40°C ambient

CPU  
**205**  
WATTS

**1U**

Cu  
V.C

**S8-4710** Copper for both Vapor Chamber Base and Stacked Fins, Passive Cooler for 1U Server and up, Support 205 Watts CPU Power Heat Dissipation.



Dimensions	118 x 78 x 25.5 mm
Weight	410 g
Thermal Performance	205W@40°C ambient

CPU  
**205**  
WATTS

**BLADE**

Cu  
FIN

Cu  
V.C

**L31-4710** Liquid cooler For 1U servers and up. Cold Plate Module with Copper base. Support 350 Watts CPU Power Heat Dissipation.



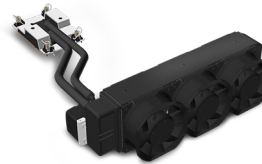
Cold Plate dim	118 x 78 x 23 mm
Radiator dim	188 x 74.5 x 40.0 mm
Ball Bearing	2 Ball Bearing
Max. Speed	12000 ± 10% RPM
Max. Air Flow	24.84 CFM
Noise Level	18.74 dBA - 52.8 dBA
Thermal Performance	350W@40°C ambient

CPU  
**350**  
WATTS

**1U**

Cu  
PLATE

**L45** Liquid cooler For 2U servers and up. Cold Plate Module with Copper base. Support 600 Watts CPU Power Heat Dissipation.



Cold Plate dim	118.0 x 78.0 x 22.8 mm
Radiator dim	297.4 x 82.0 x 83.5 mm
Ball Bearing	2 Ball Bearing
Max. Speed	8000 ± 10% RPM
Max. Air Flow	115.61 CFM
Noise Level	25.63 dBA - 64.4 dBA
Thermal Performance	600W@40°C ambient

CPU  
**600**  
WATTS

**2U**

Cu  
PLATE



▶ Socket

**LGA**  
**1851/1700**

▶ CPU

Intel® Alder Lake/  
 Raptor Lake/  
 Meteor Lake/Arrow Lake



**CP65-C**  
**CP65-S**

Cold plate for Intel Core 115x/1700/1851 support 1U server and up. Copper Cold plate with Plastic Cover, EPDM hose. Available with quick disconnect options.



Dimensions	64.5 x 64.5 x 23 mm
Weight	150 g
Supported Connector Type	CPC Everis LQ2 Staubli SCG03 ( F/M )
Thermal Performance	357W @ 0.7 LPM, 42°C coolant



**L3**

All-in-one Liquid Cooler for 1U Server, Three 40x40x28 mm PWM fans with maximum 12000 RPM fan speed, Support CPU TDP up to 195W, Compatible with both Intel and AMD.



Cold Plate dim	64.5 x 64.5 x 23.5 mm
Radiator dim	188 x 74.0 x 40 mm
Ball Bearing	2 Ball Bearing
Max. Speed	12000 ± 10% RPM
Max. Air Flow	21.53 CFM
Noise Level	25.9 dBA – 54.0 dBA
Thermal Performance	195W@30°C ambient



**L3-UH**

All-in-one Liquid Cooler for 1U Server, Three 40x40x28 mm PWM fans with maximum 26000 RPM fan speed, Support CPU TDP up to 210 Watts, Compatible with both Intel and AMD CPUs.



Cold Plate dim	64.5 x 64.5 x 23.5 mm
Radiator dim	188 x 74.0 x 40 mm
Ball Bearing	2 Ball Bearing
Max. Speed	26000 ± 10% RPM
Max. Air Flow	37.32 CFM
Noise Level	19.35 dBA – 64.17 dBA
Thermal Performance	210W@30°C ambient



**L5**

All-in-one Liquid Cooler for 4U and Tower PC, PWM fans with maximum 2300 RPM fan speed, Support CPU Overclocking Power Mode up to 215 Watts Heat Dissipation, Compatible with both Intel and AMD CPUs.



Cold Plate dim	64.5 x 64.5 x 23.5 mm
Radiator dim	165 x 96 x 120 mm
Ball Bearing	2 Ball Bearing
Max. Speed	2300 ± 10% RPM
Max. Air Flow	88.93 CFM
Noise Level	17.3 dBA – 37.7 dBA
Thermal Performance	215W@30°C ambient



**L15**

All-in-one Liquid Cooler for 4U & Tower PC. Cold Plate Module with Copper base. Support CPU Power up to 253 Watts Heat Dissipation.



Cold Plate dim	64.5 x 64.5 x 23.5 mm
Radiator dim	282.39 x 54.7 x 120 mm
Bearing	2 Ball Bearing
Max. Speed	2400 ± 10% RPM
Max. Air Flow	92 CFM
Noise Level	16 dBA – 38 dBA
Thermal Performance	253W@30°C ambient



**L19**

All-in-one Liquid Cooler for 2U. Cold Plate Module with Copper base. Support CPU Power up to 205W Heat Dissipation.



Cold Plate dim	64.5 x 64.5 x 23.5 mm
Radiator dim	204 x 45 x 75 mm
Ball Bearing	2 Ball Bearing
Max. Speed	6000 ± 10% RPM
Max. Air Flow	54.02 CFM
Noise Level	31.7 dBA – 46.42 dBA
Thermal Performance	205W@30°C ambient



▶ Socket

**LGA**  
**1851/1700**

▶ CPU

Intel® Alder Lake/  
Raptor Lake/  
Meteor Lake/Arrow Lake



**L25-1** All-in-one Liquid Cooler for 1U Server, Five 40X40 mm PWM fans with Maximum 12000 rpm Fan Speed, Fully Support CPU Overclocking 240 Watts Heat Dissipation, Compatible with both Intel and AMD CPUs.



Cold Plate dim	64.5 x 64.5 x 23 mm
Radiator dim	277.9 x 74.4 x 40 mm
Ball Bearing	2 Ball Bearing
Max. Speed	12000 ± 10% RPM
Max. Air Flow	21.53 CFM
Noise Level	25.9 dBA – 53.96 dBA
Thermal Performance	240W@30°C ambient



**L25-U** All-in-one Liquid Cooler for 1U Server, Five 40X40 mm PWM fans with Maximum 18000 RPM Fan Speed, Fully Support CPU Overclocking 253 Watts Heat Dissipation, Compatible with both Intel and AMD CPUs.



Cold Plate dim	64.5 x 64.5 x 23 mm
Radiator dim	277.9 x 74.4 x 40 mm
Ball Bearing	2 Ball Bearing
Max. Speed	18000 ± 10% RPM
Max. Air Flow	26.5 CFM
Noise Level	16 dBA – 57 dBA
Thermal Performance	253W@30°C ambient



**L34** All-in-one Liquid Cooler for 1U Server, Four 80x80x38 mm PWM fans with maximum 6000 rpm fan speed, Support CPU TDP up to 300 Watts, Compatible with both Intel & AMD CPUs.



Cold Plate dim	64.5 x 64.5 x 23 mm
Radiator dim	383.5 x 86.5 x 85.4 mm
Ball Bearing	2 Ball Bearing
Max. Speed	6000 ± 10% RPM
Max. Air Flow	102.6 CFM
Noise Level	24.77 dBA – 57.16 dBA
Thermal Performance	300W@30°C ambient



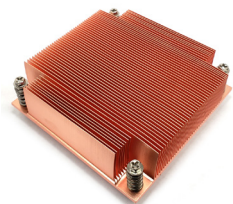
**L35** All-in-one Liquid Cooler for 1U Server, Three 80x80x38 mm PWM fans with maximum 8000 rpm fan speed, Support CPU TDP up to 305W, Compatible with both Intel and AMD CPUs.



Cold Plate dim	64.5 x 64.5 x 23 mm
Radiator dim	304.9 x 82 x 85.1 mm
Ball Bearing	2 Ball Bearing
Max. Speed	8000 ± 10% RPM
Max. Air Flow	115.61 CFM
Noise Level	25.63 dBA – 64.4 dBA
Thermal Performance	305W@30°C ambient



**Q1** Passive Copper Heat sink for 1U Server, Support 130 Watts CPU Power Heat Dissipation.



Dimensions	90.0 x 90.0 x 27 mm
Weight	490 g
Thermal Performance	130W@30°C ambient



**Q2** Passive Heat sink with Copper Base and Heat Pipes for 2U Server and Up, Support 155 Watts CPU Power Heat Dissipation.



Dimensions	90.0 x 90.0 x 66 mm
Weight	653.5 g
Thermal Performance	155W@30°C ambient



▶ Socket

**LGA**  
**1851/1700**

▶ CPU

Intel® Alder Lake/  
 Raptor Lake/  
 Meteor Lake/Arrow Lake



**Q3** Copper Heat sink with Skiving Fins for 1U Server and Up, Support 125 Watts CPU Power Heat Dissipation.



Dimensions	92 x 90 x 28 mm
Weight	444 g
Ball Bearing	2 Ball Bearing
Max. Speed	7000 ± 10% RPM
Max. Air Flow	22.28 CFM
Noise Level	21.5 dBA - 59.14 dBA
Thermal Performance	125W@30°C ambient

CPU 125 WATTS 1U Cu FIN

**Q5** 60 x 60 x 25 mm Fan with PWM function, Copper Base & Aluminum Fins with Heat pipes Embedded , Active Cooler for 2U Server & Up, Support 185W Power Heat Dissipation.



Dimensions	90.7 x 85.0 x 65.1 mm
Weight	515 g
Ball Bearing	2 Ball Bearing
Max. Speed	8000 ± 10% RPM
Max. Air Flow	46.41 CFM
Noise Level	18 dBA - 52.94 dBA
Thermal Performance	185W@30°C ambient

CPU 185 WATTS 2U Cu BASE Al FIN

**Q6** Low-Noise 92x25mm PWM Fan, H.C.C.(Heat pipes Contact CPU)Technology, Active CPU Cooler for 3U&Up and Workstation, Support 195W CPU Power Heat Dissipation.



Dimensions	91.0 x 91.0 x 110.0 mm
Weight	539 g
Ball Bearing	2 Ball Bearing
Max. Speed	6000 ± 10% RPM
Max. Air Flow	107.25 CFM
Noise Level	16 dBA - 50.40 dBA
Thermal Performance	195W@30°C ambient

CPU 195 WATTS 3U Al FIN

**Q7** Active air cooler for 1U Server and Up, copper for both Vapor Chamber Base and Stacked Fin, support up to 150 Watts CPU Power Heat Dissipation.



Dimensions	95 x 94 x 28.2 mm
Weight	380 g
Ball Bearing	2 Ball Bearing
Max. Speed	8700 ± 10% RPM
Max. Air Flow	26.25 CFM
Noise Level	23.3 dBA - 62.2 dBA
Thermal Performance	150W@30°C ambient

CPU 150 WATTS 1U Cu FIN Cu V.C

**Q8** Aluminum 80 x 80 x 15 mm PWM Blower with Copper Heat sink, Push-pin Mounting Type, Active Cooler for 1U Server and up. Support up to 125W Power Heat Dissipation.



Dimensions	92 x 95 x 28 mm
Weight	515.2 g
Ball Bearing	2 Ball Bearing
Max. Speed	7000 ± 10% RPM
Max. Air Flow	22.28 CFM
Noise Level	21.5 dBA - 59.14 dBA
Thermal Performance	125W@30°C ambient

CPU 125 WATTS 1U Cu FIN

**Q9** Aluminum Extruded Heat Sink, Screw Mounting Type, active cooler for 2U server and up. Support up to 120W CPU Power Heat Dissipation



Dimensions	95 x 95 x 41 mm
Weight	218 g
Ball Bearing	2 Ball Bearing
Max. Speed	4000 ± 10% RPM
Max. Air Flow	71.5 CFM
Noise Level	16.0 dBA - 41.58 dBA
Thermal Performance	120W@30°C ambient

CPU 120 WATTS 2U Al FIN



▶ Socket

**LGA**  
**1851/1700**

▶ CPU

Intel® Alder Lake/  
 Raptor Lake/  
 Meteor Lake/Arrow Lake



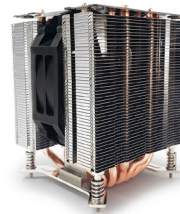
**Q10** 70 x 70 x 20 mm Top-Down Blowing Fan, Aluminum Radial fin Heat sink with Copper inserted, Active Cooler for 2U server and up. Support 140W CPU Power Heat Dissipation.



Dimensions	106 x 106 x 62 mm
Weight	430 g
Ball Bearing	2 Ball Bearing
Max. Speed	5500 ± 10% RPM
Max. Air Flow	53.9 CFM
Noise Level	20.6 dBA - 51.4 dBA
Thermal Performance	140W@30°C ambient

CPU **140 WATTS** **2U** **AI FIN** **Cu INSERTED**

**Q11** 103 X 30 Side-blow fan with PWN Function, Heat pipes with Aluminum Base and Aluminum Fin Stack, Active Cooler for 4U server and up, support 170W CPU Power Heat Dissipation.



Dimensions	95 x 95 x 130 mm
Weight	710 g
Ball Bearing	2 Ball Bearing
Max. Speed	1800 ± 10% RPM
Max. Air Flow	35.03 CFM
Noise Level	10.8 dBA - 21.3 dBA
Thermal Performance	170W@30°C ambient

CPU **170 WATTS** **4U** **AI BASE** **AI FIN**

**Q12** 9225 Round Fan Top-Down Blowing, Aluminum Radial fin Heat sink with Copper Core Inserted, Active cooler for 3U server and up, support 125W CPU Power Heat Dissipation.



Dimensions	106 x 106 x 73 mm
Weight	480 g
Ball Bearing	2 Ball Bearing
Max. Speed	3000 ± 10% RPM
Max. Air Flow	53.57 CFM
Noise Level	16 dBA - 35.98 dBA
Thermal Performance	125@30°C ambient

CPU **125 WATTS** **3U** **AI FIN** **Cu INSERTED**

**TL33** All-in-on Liquid Cooler for 1U server and up. Cold Plate Module with Copper Base, Support 280W Heat Dissipation.



Cold Plate dim	64.5 x 64.5 x 23.3 mm
Radiator dim	278.6 x 73.3 x 40 mm
Ball Bearing	2 Ball Bearing
Max. Speed	26000 ± 10% RPM
Max. Air Flow	37.32 CFM
Noise Level	19.35 dBA - 64.17 dBA
Thermal Performance	280W@30°C ambient

CPU **280 WATTS** **1U** **Cu PLATE**

**U8** Copper Base & Aluminum Fins with Heat Pipe Embedded, 92 x 92 x 12 mm Axial fan with PWM Function, Active Cooler for 1.5U & Up, Support 135W CPU Power Heat Dissipation.



Dimensions	92.0 x 92.0 x 12.0 mm
Weight	392 g
Ball Bearing	2 Ball Bearing
Max. Speed	3200 ± 10% RPM
Max. Air Flow	35.78 CFM
Noise Level	22.3 dBA - 36.2 dBA
Thermal Performance	135@30°C ambient

CPU **135 WATTS** **1.5U** **AI FIN** **Cu BASE**

**U9** Aluminum Fins with Copper Heat Pipe Embedded, 120 x 25 x 120 mm fan with PWM Function, Active Cooler for Desktop, Support 220 Watts CPU Power Heat Dissipation.



Dimensions	125 x 158 x 80 mm
Weight	416 g
Ball Bearing	2 Ball Bearing
Max. Speed	8700 ± 10% RPM
Max. Air Flow	26.25 CFM
Noise Level	23.3 dBA - 62.2 dBA
Thermal Performance	220@30°C ambient

CPU **220 WATTS** **TOWER PC** **AI FIN**

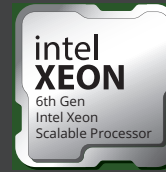


▶ Socket

**LGA**  
**1851/1700**

▶ CPU

Intel®  
 Granits Rapid AP



**U10** Copper Base & Aluminum Fins with Heat Pipe Embedded, 92.0 x 92.0 x 12.0 mm fan with PWM Function, Active Cooler for 1.5U & Up, Support 115W Power Heat Dissipation.



Dimensions	93.5 x 95.0 x 30 mm
Weight	348 g
Ball Bearing	2 Ball Bearing
Max. Speed	3200 ± 10% RPM
Max. Air Flow	35.78 CFM
Noise Level	22.3 dBA - 36.2 dBA
Thermal Performance	115@30°C ambient

CPU  
**115**  
WATTS

**1.5U**

**Al**  
FIN

**Cu**  
BASE

**Z60** Aluminum 6063-T5 Extruded Radial Fin Heat Sink, Active Cooler for 1.5U and up, Support 65W Power Heat Dissipation.



Dimensions	93.0 x 93.0 x 31.3 mm
Weight	185 g
Ball Bearing	2 Ball Bearing
Max. Speed	2500 ± 10% RPM
Max. Air Flow	30.8 CFM
Noise Level	16 dBA - 27.3 dBA
Thermal Performance	65W@30°C ambient

CPU  
**65**  
WATTS

**1.5U**

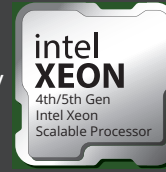
**Al**  
FIN





▶ Socket  
**LGA 4677**

▶ CPU  
Intel® Sapphire Rapids/  
Emerald Rapids



**4677-C**  
**4677-S**

Cold plate for Intel Xeon scalable Sapphire/Emerald Rapids socket LGA4677, support 1U server and up. Copper Cold plate with Plastic Cover, EPDM hose. Available with quick disconnect options.



Dimensions	118 x 78 x 24.7 mm
Weight	350 g
Supported Connector Type	CPC Everis LQ2 Staubli SCG03 ( F/M )
Thermal Performance	1520W @ 0.7 LPM, 42°C coolant

CPU **1520 WATTS** **1U** **Cu PLATE**

**L31**

All-in-one Liquid Cooler for 1U Server, Three 40 x 40 x 28 mm PWM fans with maximum 12000 RPM fan speed, Support CPU TDP up to 350W.



Cold Plate dim	118 x 78 x 23 mm
Radiator dim	188 x 74.5 x 40 mm
Ball Bearing	2 Ball Bearing
Max. Speed	12000 ± 10% RPM
Max. Air Flow	24.84 CFM
Noise Level	18.74 dBA – 52.8 dBA
Thermal Performance	350W@40°C ambient

CPU **350 WATTS** **1U** **Cu PLATE**

**L45-4677**

All-in-one Liquid Cooler for 2U Server and up, Cold Plate Module with Copper Base. Support up to 600 Watts CPU Power Heat Dissipation.



Cold Plate dim	118 x 78 x 22.8 mm
Radiator dim	297.4 x 82.0 x 83.5 mm
Ball Bearing	2 Ball Bearing
Max. Speed	8000 ± 10% RPM
Max. Air Flow	115.61 CFM
Noise Level	25.63 dBA – 64.4dBA
Thermal Performance	600W@40°C ambient

CPU **600 WATTS** **2U** **Cu PLATE**

**S2**

Aluminum Stacked Fins, 5 Heat pipes with Copper Vapor Chamber Base, Passive Cooler for 2U Server and up, Support 350 Watts CPU Power Heat Dissipation.



Dimensions	118 x 78 x 64 mm
Weight	526.6 g
Thermal Performance	350W@40°C ambient

CPU **350 WATTS** **2U** **Al FIN** **Cu V.C**

**S3**

Active Cooler for 1U Server and up, Copper Heat sink with Vapor Chamber Base, Steel Dual-Outlet PWM Blower, Support 205 Watts CPU Power Heat Dissipation.

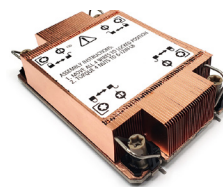


Dimensions	118 x 80 x 27 mm
Weight	424.6 g
Ball Bearing	2 Ball Bearing
Max. Speed	8600 ± 10% RPM
Max. Air Flow	26.25 CFM
Noise Level	23.3 dBA – 62.2 dBA
Thermal Performance	205W@40°C ambient

CPU **205 WATTS** **1U** **Cu FIN** **Cu V.C**

**S4**

Copper for both Vapor Chamber Base and Stacked Fins, Passive Cooler for 1U Server and up, Support 205 Watts CPU Power Heat Dissipation.



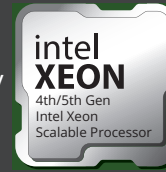
Dimensions	118 x 78 x 27 mm
Weight	437.6 g
Thermal Performance	205@40°C ambient

CPU **205 WATTS** **1U** **Cu FIN** **Cu V.C**

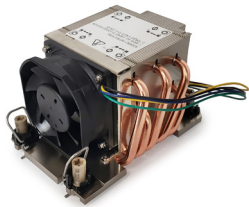


▶ Socket  
**LGA 4677**

▶ CPU  
 Intel® Sapphire Rapids/  
 Emerald Rapids



**S5R1** Active Cooler for 2U Server and up, Aluminum Stacked Fins with 5 Heat Pipes embedded, Side-blow fan with PWM Function, Support 350W CPU Power Heat Dissipation.



Dimensions	118 x 82 x 66 mm
Weight	425.1 g
Ball Bearing	2 Ball Bearing
Max. Speed	11000 ± 10% RPM
Max. Air Flow	58.31 CFM
Noise Level	25.8 dBA - 59.8 dBA
Thermal Performance	350W@40°C ambient



**S6** Aluminum Stacked Fins with Heat Pipes directly contact CPU, Active Cooler for 3U Server and up, Support 350 Watts CPU Power Heat Dissipation.



Dimensions	128 x 91 x 110 mm
Weight	659.3 g
Ball Bearing	2 Ball Bearing
Max. Speed	4500 ± 10% RPM
Max. Air Flow	76.95 CFM
Noise Level	23.95 dBA - 50.91 dBA
Thermal Performance	350W@40°C ambient



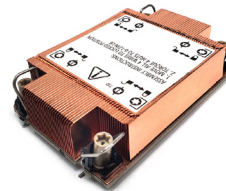
**S7** Active Cooler for 1U Server and up, Copper Heat sink with Vapor Chamber Base, Steel Dual-Outlet PWM Blower, Support 205 Watts CPU Power Heat Dissipation.



Dimensions	118.6 x 80.5 x 27.4 mm
Weight	424.6 g
Ball Bearing	2 Ball Bearing
Max. Speed	8700 ± 10% RPM
Max. Air Flow	18.97 CFM
Noise Level	23.3 dBA - 62.2 dBA
Thermal Performance	205W@40°C ambient



**S8** Copper for both Vapor Chamber Base and Stacked Fins, Passive Cooler for Blade Server and up, Support 205 Watts CPU Power Heat Dissipation.



Dimensions	118 x 78 x 25.5 mm
Weight	410 g
Thermal Performance	205@40°C ambient



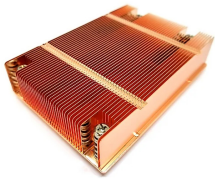
▶ Socket  
**SP6/TR5**

▶ CPU  
AMD® Thread ripper /  
Thread ripper PRO 7000  
and AMD® EPYC™



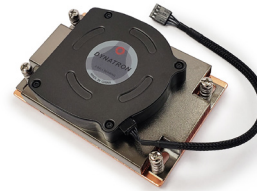
**A51** Copper 1100 Vapor Chamber Heat sink with Copper Stacked Fin, Passive Cooler for 1U server, Support CPU Power up to 205 Watts Heat Dissipation.

Dimensions	120 x 82 x 27 mm
Weight	500 g
Thermal Performance	205W@40°C ambient



**A52** Copper 1100 Vapor Chamber and Stacked Fin, Active Cooler for 1U Server and Up, Support CPU Power up to 140 Watts Heat Dissipation.

Dimensions	120 x 82 x 28.6 mm
Weight	500 g
Ball Bearing	2 Ball Bearing
Max. Speed	8600 ± 10% RPM
Max. Air Flow	26.25 CFM
Noise Level	23.3 dBA – 62.2 dBA
Thermal Performance	140W@40°C ambient



**A53** Aluminum Base, Aluminum Stacked Fin with Heatpipe Embedded, Passive Cooler for 2U Server and up, Support 225 Watts CPU Power Heat Dissipation.

Dimensions	113.0 x 80.0 x 64.0 mm
Weight	450 g
Thermal Performance	225W@40°C ambient



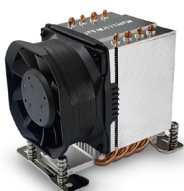
**A54** Aluminum Heat sink with Heat pipe Embedded, Active Cooler for 2U Server and up, Support 225 Watts CPU Power Heat Dissipation.

Dimensions	119.0 x 79.0 x 66.0 mm
Weight	455 g
Ball Bearing	2 Ball Bearing
Max. Speed	11000 ± 10% RPM
Max. Air Flow	58.31 CFM
Noise Level	25.8 dBA – 59.8 dBA
Thermal Performance	225W@40°C ambient



**A55** Aluminum Heat sink with Heat pipe Embedded, Active Cooler for 3U Server and up, Support 225W Power Heat Dissipation.

Dimensions	120 x 82 x 110 mm
Weight	656 g
Ball Bearing	2 Ball Bearing
Max. Speed	8000 ± 10% RPM
Max. Air Flow	115.61 CFM
Noise Level	25.63 dBA – 64.4 dBA
Thermal Performance	225W@40°C ambient



**L36** All-in-one Liquid Cooler for 1U Server, Three 40 x 40 x 28 mm PWM Fans with Maximum 12000 RPM Fan speed, Support CPU TDP up to 225 Watts.

Cold Plate dim	117 x 80 x 24.5 mm
Radiator dim	188 x 74.5 x 40 mm
Ball Bearing	2 Ball Bearing
Max. Speed	8000 ± 10% RPM
Max. Air Flow	24.84 CFM
Noise Level	18.74 dBA – 52.8 dBA
Thermal Performance	225W@40°C ambient



▶ Socket  
**AM4/AM5**

▶ CPU  
 AMD® Ryzen processors  
 Socket AM4/AM5



**A18** Copper 1100 with Skived Fins, Passive Cooler for 1U server, Support CPU Power up to 120 Watts Heat Dissipation.



Dimensions	106 x 76 x 27.5 mm
Weight	502 g
Ball Bearing	2 Ball Bearing
Max. Speed	6000 ± 10% RPM
Max. Air Flow	14.3 CFM
Noise Level	19.1 dBA – 53.8 dBA
Thermal Performance	120W@30°C ambient

CPU 120 WATTS 1U Cu FIN

**A19** 80 x 80 x 38 mm Power Fan with PWM function, HCC (Heat pipe Contact CPU) technology, Active Cooler for 3U server & up, Workstations, support Power 155W Heat Dissipation.



Dimensions	107.5 x 78 x 110 mm
Weight	600 g
Ball Bearing	2 Ball Bearing
Max. Speed	3800 ± 10% RPM
Max. Air Flow	65.4 CFM
Noise Level	16 dBA – 43.4 dBA
Thermal Performance	155W@30°C ambient

CPU 155 WATTS 3U AI FIN

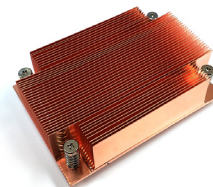
**A24** 60 x 60 x 28 mm PWM Fan, Aluminum Fins with Heat pipe directly contact CPU, Active Cooler for 2U server and up, Support CPU Power 155 Watts Heat Dissipation.



Dimensions	107 x 78 x 67 mm
Weight	400 g
Ball Bearing	2 Ball Bearing
Max. Speed	7000 ± 10% RPM
Max. Air Flow	40.5 CFM
Noise Level	16 dBA – 47.5 dBA
Thermal Performance	155W@30°C ambient

CPU 155 WATTS 2U Cu FIN

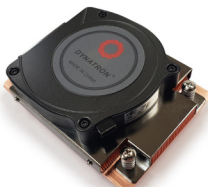
**A37** Copper Heat Sink with Skiving Fins, Active Cooler for 1U Server and up, Support 120 Watts CPU Power Heat Dissipation.



Dimensions	106.0 x 74.0 x 27.0 mm
Weight	586 g
Thermal Performance	120W@30°C ambient

CPU 120 WATTS 1U Cu FIN

**A42** Copper 1100 Skived Fins, Active Cooler for 1U server, support CPU power up to 140 Watts heat dissipation.



Dimensions	110 x 86 x 27.5 mm
Weight	550 g
Ball Bearing	2 Ball Bearing
Max. Speed	8600 ± 10% RPM
Max. Air Flow	26.25 CFM
Noise Level	23.3 dBA – 62.2 dBA
Thermal Performance	140W@30°C ambient

CPU 140 WATTS 1U Cu FIN

**A43** Passive Heat sink for 2U server solution, Aluminum Fin with heat pipe inserted, support 155W Power heat Dissipation.



Dimensions	105 x 74 x 63 mm
Weight	450 g
Thermal Performance	155W@30°C ambient

CPU 155 WATTS 2U AI FIN



▶ Socket  
**AM4/AM5**

▶ CPU  
AMD® Ryzen processors  
Socket AM4/AM5



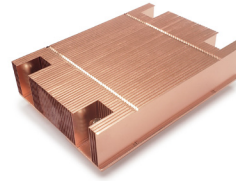
**A45** Copper 1100 Skived Fins with Vapor Chamber, Active Cooler for 1U server, support CPU power up to 145W heat dissipation.



Dimensions	110 x 85 x 27.3 mm
Weight	416 g
Ball Bearing	2 Ball Bearing
Max. Speed	8700 ± 10% RPM
Max. Air Flow	26.25 CFM
Noise Level	23.3 dBA - 62.2 dBA
Thermal Performance	145W@30°C ambient



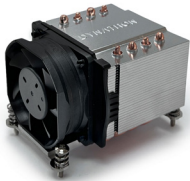
**A46** Passive Heat sink for 1U server solution, Copper Fin with Vapor Chamber, support 145W CPU Power Heat Dissipation.



Dimensions	110 x 80 x 26.9 mm
Weight	440 g
Thermal Performance	145W@30°C ambient



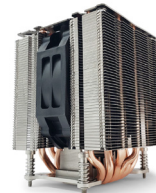
**A47** 60 x 60 x 25 mm Power Fan with PWM function, 4 Heat pipes and Aluminum Stacked Fin, Active Cooler for 2U server & up, support CPU Power 170W Heat Dissipation.



Dimensions	107 x 78 x 67 mm
Weight	400 g
Ball Bearing	2 Ball Bearing
Max. Speed	11000 ± 10% RPM
Max. Air Flow	58.31 CFM
Noise Level	25.8 dBA - 59.8 dBA
Thermal Performance	170W@30°C ambient



**A49** 103 x 103 x 30 mm Power Fan with PWM function. Heat pipes with Aluminum Stacked Fin and Base, Active Cooler for 4U server & up, support 175W Heat Dissipation.



Dimensions	95 x 95 x 130 mm
Weight	710 g
Ball Bearing	2 Ball Bearing
Max. Speed	1800 ± 10% RPM
Max. Air Flow	35.03 CFM
Noise Level	10.8 dBA - 21.3 dBA
Thermal Performance	175W@30°C ambient



**CP65-C**  
**CP65-S** Cold plate for AMD Ryzen AM4/AM5, support 1U server and up. Copper Cold plate with Plastic Cover, EPDM hose. Available with quick disconnect options.



Dimensions	64.5 x 64.5 x 23 mm
Weight	150 g
Supported Connector Type	CPC Everis LQ2 Staubli SCG03 ( F/M )
Thermal Performance	357W @ 0.7 LPM, 42°C coolant



**L3** All-in-one Liquid Cooler for 1U Server, Three 40x40x28 mm PWM fans with maximum 12000 RPM fan speed, Support CPU TDP up to 165W, Compatible with both Intel and AMD.



Cold Plate dim	64.5 x 64.5 x 23.5 mm
Radiator dim	188 x 74.0 x 40 mm
Ball Bearing	2 Ball Bearing
Max. Speed	12000 ± 10% RPM
Max. Air Flow	21.53 CFM
Noise Level	25.9 dBA - 54.0 dBA
Thermal Performance	165W@30°C ambient



▶ Socket  
**AM4/AM5**

▶ CPU  
 AMD® Ryzen processors  
 Socket AM4/AM5



**L3-UH** All-in-one Liquid Cooler for 1U Server, Three 40x40x28 mm PWM fans with maximum 26000 RPM fan speed, Support CPU TDP up to 170 Watts, Compatible with both Intel and AMD CPUs.



Cold Plate dim	64.5 x 64.5 x 23.5 mm
Radiator dim	188 x 74.0 x 40 mm
Ball Bearing	2 Ball Bearing
Max. Speed	26000 ± 10% RPM
Max. Air Flow	37.32 CFM
Noise Level	19.35 dBA - 64.17 dBA
Thermal Performance	170W@30°C ambient



**L5** All-in-one Liquid Cooler for 4U and Tower PC, PWM fans with maximum 2300 RPM fan speed, Support CPU Overclocking Power Mode up to 170 Watts Heat Dissipation, Compatible with both Intel and AMD CPUs.



Cold Plate dim	64.5 x 64.5 x 23.5 mm
Radiator dim	165 x 96 x 120 mm
Ball Bearing	2 Ball Bearing
Max. Speed	2300 ± 10% RPM
Max. Air Flow	88.93 CFM
Noise Level	17.3 dBA - 37.7 dBA
Thermal Performance	170W@30°C ambient



**L15** All-in-one Liquid Cooler for 4U & Tower PC. Cold Plate Module with Copper base. Support Power up to 185W Heat Dissipation.



Cold Plate dim	64.5 x 64.5 x 23.5 mm
Radiator dim	282.39 x 54.7 x 120 mm
Bearing	2 Ball Bearing
Max. Speed	2400 ± 10% RPM
Max. Air Flow	92 CFM
Noise Level	16 dBA - 38 dBA
Thermal Performance	185W@30°C ambient



**L19** All-in-one Liquid Cooler for 2U. Cold Plate Module with Copper base. Support CPU Power up to 170W Heat Dissipation.



Cold Plate dim	64.5 x 64.5 x 23.5 mm
Radiator dim	204 x 45 x 75 mm
Ball Bearing	2 Ball Bearing
Max. Speed	6000 ± 10% RPM
Max. Air Flow	54.02 CFM
Noise Level	31.7 dBA - 46.42 dBA
Thermal Performance	170W@30°C ambient



**L25-1** All-in-one Liquid Cooler for 1U Server, Five 40x40 mm PWM fans with Maximum 12000 rpm Fan Speed, Fully Support CPU Overclocking 170 Watts Heat Dissipation, Compatible with both Intel and AMD CPUs.



Cold Plate dim	64.5 x 64.5 x 23 mm
Radiator dim	277.9 x 74.4 x 40
Ball Bearing	2 Ball Bearing
Max. Speed	12000 ± 10% RPM
Max. Air Flow	21.53 CFM
Noise Level	25.9 dBA - 53.96 dBA
Thermal Performance	170W@30°C ambient



**L25-U** All-in-one Liquid Cooler for 1U Server, Five 40x40 mm PWM fans with Maximum 18000 RPM Fan Speed, Fully Support CPU Overclocking 180 Watts Heat Dissipation, Compatible with both Intel and AMD CPUs.



Cold Plate dim	64.5 x 64.5 x 23 mm
Radiator dim	277.9 x 74.4 x 40
Ball Bearing	2 Ball Bearing
Max. Speed	18000 ± 10% RPM
Max. Air Flow	26.5 CFM
Noise Level	16 dBA - 57 dBA
Thermal Performance	180W@30°C ambient



▶ Socket  
**AM4/AM5**

▶ CPU  
 AMD® Ryzen processors  
 Socket AM4/AM5



**L34** All-in-one Liquid Cooler for 1U Server, Four 80x80x38 mm PWM fans with maximum 6000 rpm fan speed, Support CPU TDP up to 205 Watts, Compatible with both Intel & AMD CPUs.



Cold Plate dim	64.5 x 64.5 x 23 mm
Radiator dim	383.5 x 86.5 x 85.4 mm
Ball Bearing	2 Ball Bearing
Max. Speed	6000 ± 10% RPM
Max. Air Flow	102.6 CFM
Noise Level	24.77 dBA - 57.16 dBA
Thermal Performance	205W@30°C ambient



**L35** All-in-one Liquid Cooler for 1U Server, Three 80x80x38 mm PWM fans with maximum 8000 rpm fan speed, Support CPU TDP up to 210W, Compatible with both Intel and AMD CPUs.



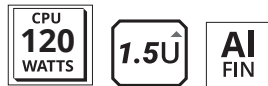
Cold Plate dim	64.5 x 64.5 x 23 mm
Radiator dim	304.9 x 82 x 85.1 mm
Ball Bearing	2 Ball Bearing
Max. Speed	8000 ± 10% RPM
Max. Air Flow	115.61 CFM
Noise Level	25.63 dBA - 64.4 dBA
Thermal Performance	210W@30°C ambient



**T497** Passive Cooler with Aluminum Stacked Fin with Heat pipe Embedded for 1.5U Server and up, Support 120 Watts CPU Power Heat Dissipation.



Dimensions	93 x 100 x 30 mm
Weight	250 g
Ball Bearing	1 Ball Bearing
Max. Speed	3600 ± 10% RPM
Max. Air Flow	40 CFM
Noise Level	17 dBA - 35.8 dBA
Thermal Performance	120W@40°C ambient



**TL33** All-in-on Liquid Cooler for 1U server and up. Cold Plate Module with Copper Base, Support 185W Heat Dissipation.



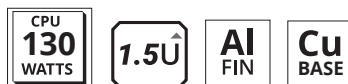
Cold Plate dim	73 x 73 x 25.9 mm
Radiator dim	278.6 x 73.3 x 40 mm
Ball Bearing	2 Ball Bearing
Max. Speed	26000 ± 10% RPM
Max. Air Flow	37.32 CFM
Noise Level	19.35 dBA - 64.17 dBA
Thermal Performance	185W@30°C ambient



**U8** Copper Base & Aluminum Fins with Heat Pipe Embedded, 92 x 92 x 12 mm Axial fan with PWM Function, Active Cooler for 1.5U & Up, Support 130W CPU Power Heat Dissipation.



Dimensions	92.0 x 92.0 x 12.0 mm
Weight	392 g
Ball Bearing	2 Ball Bearing
Max. Speed	3200 ± 10% RPM
Max. Air Flow	35.78 CFM
Noise Level	22.3 dBA - 36.2 dBA
Thermal Performance	130@30°C ambient



**U9** Aluminum Fins with Copper Heat Pipe Embedded, 120 x 25 x 120 mm fan with PWM Function, Active Cooler for Desktop, Support 175 Watts CPU Power Heat Dissipation.



Dimensions	125 x 158 x 80 mm
Weight	416 g
Ball Bearing	2 Ball Bearing
Max. Speed	8700 ± 10% RPM
Max. Air Flow	26.25 CFM
Noise Level	23.3 dBA - 62.2 dBA
Thermal Performance	175@30°C ambient



▶ Socket  
**AM4/AM5**

▶ CPU  
 AMD® Ryzen processors  
 Socket AM4/AM5



**U10** Copper Base & Aluminum Fins with Heat Pipe Embedded, 92.0 x 92.0 x 12.0 mm fan with PWM Function, Active Cooler for 1.5U & Up, Support 115W Power Heat Dissipation.



Dimensions	93.5 x 95.0 x 30 mm
Weight	348 g
Ball Bearing	2 Ball Bearing
Max. Speed	3200 ± 10% RPM
Max. Air Flow	35.78 CFM
Noise Level	22.3 dBA - 36.2 dBA
Thermal Performance	115@30°C ambient



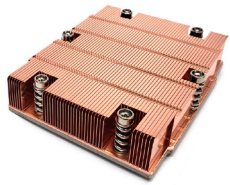


▶ Socket  
**SP5**

▶ CPU  
 AMD® Genoa®  
 Processor Family



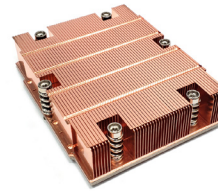
**J1** Passive Heat sink Cooler for Blade server and up, Copper for both Vapor Chamber Base and Stacked Fin. Support up to 260W CPU Power Heat Dissipation.



Dimensions	118.0 x 92.4 x 25.0 mm
Weight	612 g
Thermal Performance	260W@38°C ambient



**J2** Passive Heat sink Cooler for 1U server and up, Copper for both Vapor Chamber Base and Stacked Fin. Support up to 260 W CPU Power Heat Dissipation.



Dimensions	118.0 x 92.4 x 27.0 mm
Weight	642 g
Thermal Performance	260W@38°C ambient



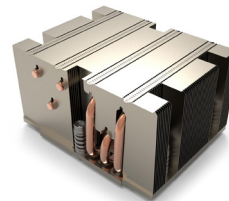
**J5** Active Air Cooler for 1U Server and Up, Copper for both Vapor Chamber Base and Stacked Fin, Support up to 260 Watts CPU Power Heat Dissipation.



Dimensions	118.0 x 92.4 x 27.0 mm
Weight	576 g
Ball Bearing	2 Ball Bearing
Max. Speed	8600 ± 10% RPM
Max. Air Flow	26.25 CFM
Noise Level	23.3 dBA – 62.2 dBA
Thermal Performance	260W@47°C ambient



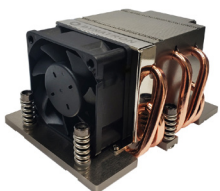
**J7** Passive Heat sink Cooler for 2U server and up, 3 Heat pipes with Aluminum Stacked Fins and Copper Embedded Base, Support up to 320 W CPU Power Heat Dissipation.



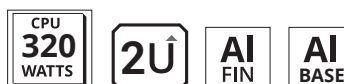
Dimensions	118.0 x 92.4 x 64.0 mm
Weight	564 g
Thermal Performance	320W@47°C ambient



**J10** Active Cooler for 2U Server & Up, 5 Heat pipes with Aluminum Fin Base and Aluminum Fin Stack, Support CPU Power up to 320 Watts Heat Dissipation.



Dimensions	118.0 x 92.4 x 65 mm
Weight	510 g
Ball Bearing	2 Ball Bearing
Max. Speed	11000 ± 10% RPM
Max. Air Flow	58.31 CFM
Noise Level	25.8 dBA – 59.8 dBA
Thermal Performance	320@40°C ambient



**J12** Aluminum Stacked Fins with Heat pipes and Copper Heat Spreader Embedded in Aluminum Heat sink Base, Support up to 320 Watts CPU Power Dissipation.



Dimensions	118.0 x 92.4 x 105.0 mm
Weight	798 g
Ball Bearing	2 Ball Bearing
Max. Speed	8100 ± 10% RPM
Max. Air Flow	107.79 CFM
Noise Level	25.63 dBA – 64.40 dBA
Thermal Performance	320@30°C ambient



▶ Socket  
**SP5**

▶ CPU  
 AMD® Genoa®  
 Processor Family



**L32** All-in-one Liquid Cooler for 1U Server, Cold Plate Module with Copper base. 40 mm Cooling fans with 4-pin PWM connector. Support up to 500W Heat Dissipation.



Cold Plate dim	118 x 92.4 x 24.8 mm
Radiator dim	188 x 74.5 x 40 mm
Ball Bearing	2 Ball Bearing
Max. Speed	15000 ± 10% RPM
Max. Air Flow	26.91 CFM
Noise Level	42.26 dBA - 85.81 dBA
Thermal Performance	500W@40°C ambient



**SP5-C**  
**SP5-S**

Cold plate for AMD Epyc Genoa/Bergamo/Turin socket SP5, support 1U server and up. Copper Cold plate with Plastic Cover, EPDM hose. Available with quick disconnect options.



Dimensions	118 x 92.4 x 24.8 mm
Weight	400 g
Supported Connector Type	CPC Everis LQ2 Staubli SCG03 (F/M)
Thermal Performance	1300W @ 0.7 LPM, 42°C coolant



▶ Socket  
**LGA 4926**

▶ CPU  
 Ampere®  
 Altra® Family



**L43** All-in-one Liquid Cooler for 1U Server, Three 40 x 40 x 28 mm PWM fans with maximum 26000 RPM fan speed, Support CPU TDP up to 250 Watts CPU Power Heat Dissipation.



Cold Plate dim	64.5 x 64.5 x 23.3 mm
Radiator dim	188 x 74 x 40 mm
Ball Bearing	2 Ball Bearing
Max. Speed	26000 ± 10% RPM
Max. Air Flow	37.32 CFM
Noise Level	19.35 dBA – 64.17 dBA
Thermal Performance	250W@43°C ambient



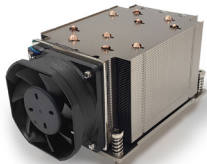
**L44** All-in-one Liquid Cooler for 1U Server, Three 80x80x38 mm PWM fans with maximum 8000 RPM fan speed, Support TDP up to 250W CPU Power Heat Dissipation.



Cold Plate dim	64.5 x 64.5 x 23.3 mm
Radiator dim	305 x 83.5 x 82 mm
Ball Bearing	2 Ball Bearing
Max. Speed	8000 ± 10% RPM
Max. Air Flow	115.61 CFM
Noise Level	25.63 dBA – 64.4 dBA
Thermal Performance	250W@43°C ambient



**W1 ACTIVE** Copper Heat sink Base & Aluminum Fins with Heat Pipe Embedded. Switchable Air Cooler for 2U server and up, Support 250 Watts CPU Power Heat Dissipation.



Dimensions	141.1 x 84.0 x 72.0 mm
Weight	612 g
Ball Bearing	2 Ball Bearing
Max. Speed	11000 ± 10% RPM
Max. Air Flow	58.31 CFM
Noise Level	25.8 dBA – 59.8 dBA
Thermal Performance	250W@35°C ambient



**W1 PASSIVE** Copper Heat sink Base & Aluminum Fins with Heat Pipe Embedded. Switchable Air Cooler for 2U server and up, Support 250 Watts CPU Power Heat Dissipation.



Dimensions	116.0 x 84.0 x 72.0 mm
Weight	512 g
Ball Bearing	2 Ball Bearing
Max. Speed	11000 ± 10% RPM
Max. Air Flow	58.31 CFM
Noise Level	25.8 dBA – 59.8 dBA
Thermal Performance	250W@35°C ambient



**W2** Active Cooler for 3U and up. Direct Contact Aluminum Heat pipe Heat sink base and Fins. 80 x 80 x 38 mm PWN Fans. Support CPU TDP up to 250 W.



Dimensions	130.3 x 83.6 x 110 mm
Weight	767 g
Ball Bearing	2 Ball Bearing
Max. Speed	8000 ± 10% RPM
Max. Air Flow	115.61 CFM
Noise Level	25.63 dBA – 64.4 dBA
Thermal Performance	250W@43°C ambient



**W3** Active Cooler for Tower PC. Direct Contact Aluminum Heat pipe Heat sink base and Fins. 120 x 120 x 25 mm PWN Fans with Maximum 2200 RPM Fan Speed, support CPU TDP up to 250 W.



Dimensions	141.1 x 84 x 72 mm
Weight	706 g
Ball Bearing	2 Ball Bearing
Max. Speed	2200 ± 10% RPM
Max. Air Flow	84.3 CFM
Noise Level	14.26 dBA – 36.1 dBA
Thermal Performance	250@43°C ambient

